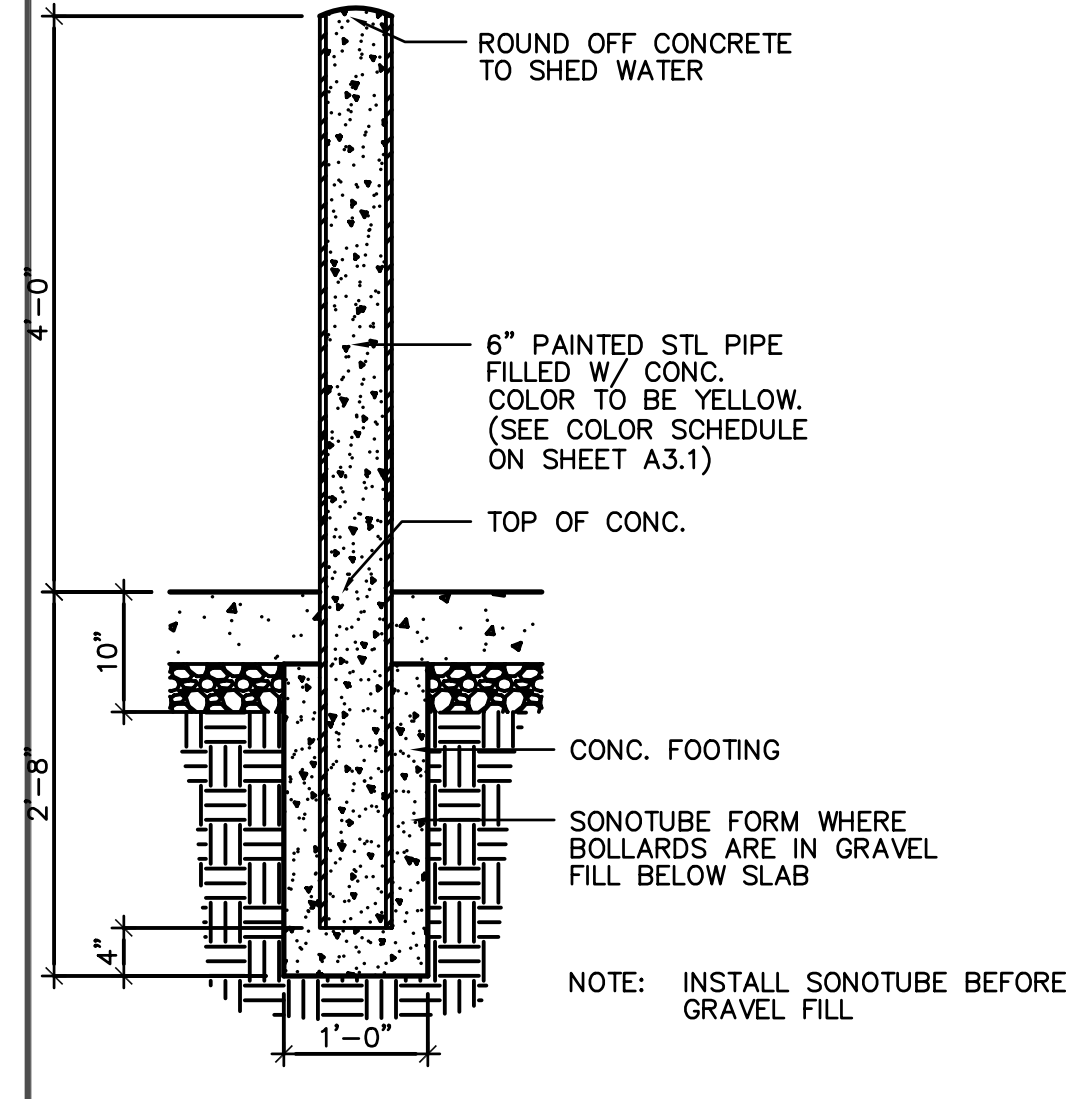
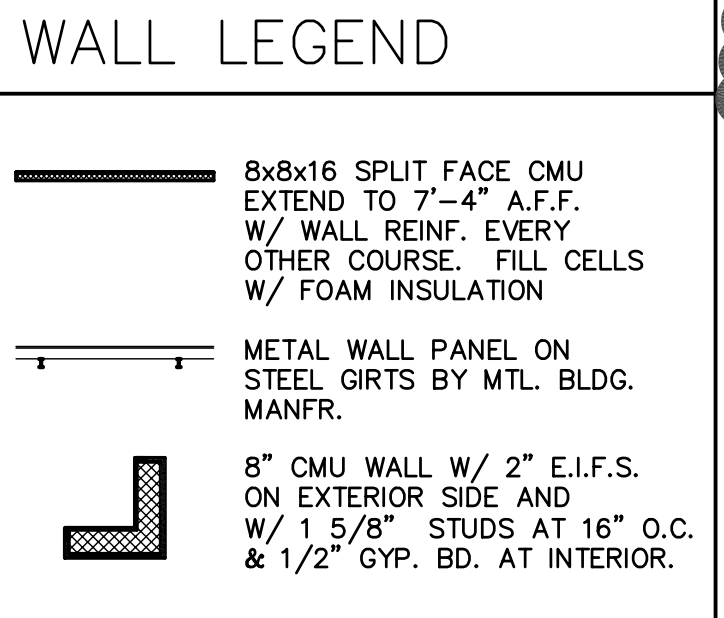


- GENERAL NOTES**
- DIMENSIONS SHOWN ARE TO THE FACE OF C.M.U. BLOCK AND/OR FACE OF STEEL FRAMING.
 - REFER TO SHEET SP1 & GP1 FOR SIDEWALKS & CURB INFORMATION.

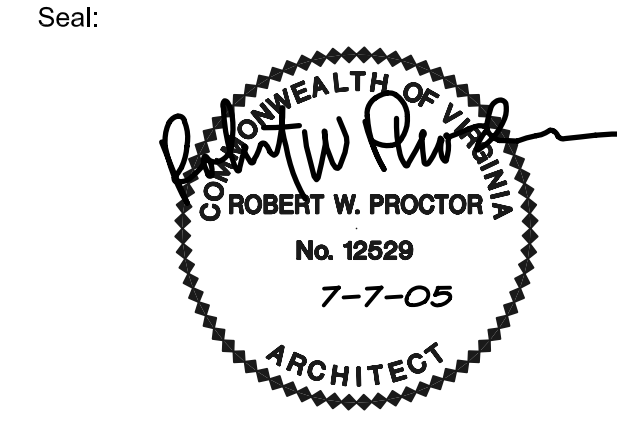
- KEY NOTES**
- STEEL BENT - BY MTL. BLDG. MFR.
 - STEEL SUPPORT COL. - BY MTL. BLDG. MFR.
 - STEEL SUPPORT COL. - BY MTL. BLDG. MFR. SEE 4/A1.1 FOR COLUMN PROTECTION
 - STEEL WIND COL. - BY MTL. BLDG. MFR.
 - BOLLARD - SEE 5/A1.1



1537 Western Avenue
 Knoxville, TN 37921-6318
 Phone (865) 546-3232
 Fax (865) 546-3969

3881 S. Davey Crockett Pkwy
 Morristown, TN 37813
 Phone (423) 581-0968
 Fax (423) 581-0927

Consulting Engineers
 Architects - Planners



Project No.: 2223

Drawn By: TAD

Eng Check / Dept Check / QA Check

Issue / Revision

No.	Date	Description
1	7/11/05	OWNER'S COMMENTS

APPROVED FOR CONSTRUCTION:
 TENANT: DATE:
 OWNER: DATE:

HOLLINGSWORTH JOB NO: VP-145-05

This drawing, as an instrument of service, is the property of Hodge Engineering Company (HEC). It may not be copied in whole or in part without the written permission of HEC. HEC denies any and all responsibility or liability for problems which arise from failure to follow these plans, specifications and design intent they convey, or problems which arise from other's failure to obtain and/or follow the design professional's guidance with respect to any error, omissions, inconsistencies, ambiguities or conflicts which are alleged.

Project Title:
HOLLINGSWORTH COMPANY SOUTHPOINT BUSINESS PARK BUILDING 12, LOT 8

Location:
PRINCE GEORGE, VIRGINIA

Sheet Contents:
OVERALL FLOOR PLAN AND DETAILS

Date:
7 JULY, 2005

Sheet Number: