

4/25/11

Issue / Revision:

No.	Date	Description
1	07/11/05	OWNER'S COMMENTS
2	09/2/05	REVISED
3	05/06/11	GENERAL REVISION

Approved For Construction:

Tenant: _____ Date: _____

Owner: _____ Date: _____

Hollingsworth Job No.: VP-145

Hodge Project No.: 2625.2

Drawn By: GLD/RH

Eng Check _____ Dept Check _____ QA Check _____

This drawing, as an instrument of service, is the property of Hodge Associates. It may not be copied in whole or in part without the written permission of Hodge Associates. Hodge Associates denies any and all responsibility or liability for problems which arise from failure to follow these plans, specifications and design intent they convey, or problems which arise from others failure to obtain and/or follow the design professional's guidance with respect to any error, omissions, inconsistencies, ambiguities or conflicts which are alleged.

Project Title:

**Hollingsworth Companies
Southpoint
Business Park
Building 8, Lot 12**

Location:

**Prince George,
Virginia**

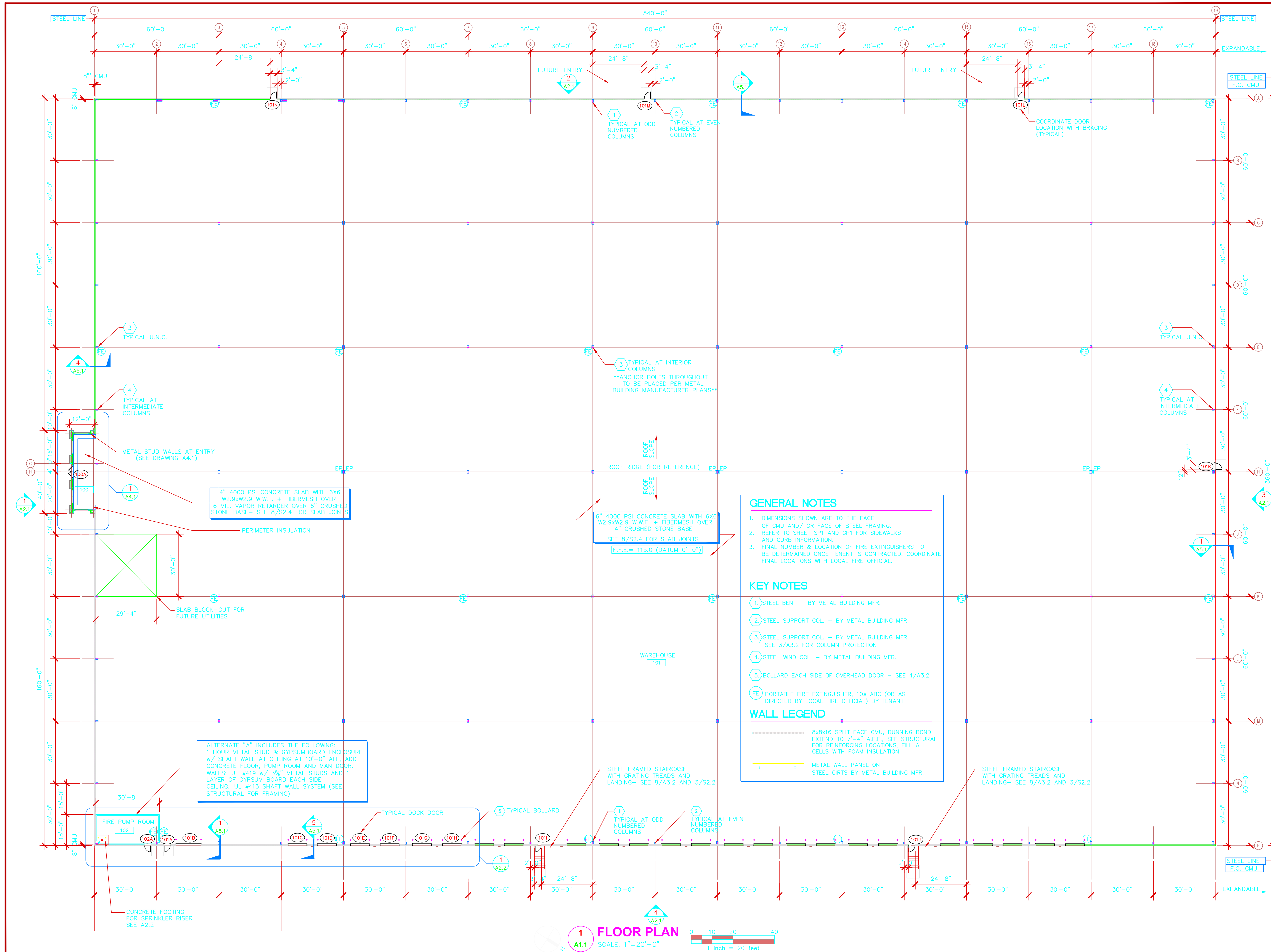
Sheet Contents:

FLOOR PLAN

Date: 06 May 2011

Sheet Number:

1 OF 9 **A1.1**



1 FLOOR PLAN
SCALE: 1"=20'-0"
1 inch = 20 feet

GENERAL NOTES

1. DIMENSIONS SHOWN ARE TO THE FACE OF CMU AND/OR FACE OF STEEL FRAMING.
2. REFER TO SHEET SP1 AND GP1 FOR SIDEWALKS AND CURB INFORMATION.
3. FINAL NUMBER & LOCATION OF FIRE EXTINGUISHERS TO BE DETERMINED ONCE TENANT IS CONTRACTED. COORDINATE FINAL LOCATIONS WITH LOCAL FIRE OFFICIAL.

KEY NOTES

1. STEEL BENT - BY METAL BUILDING MFR.
2. STEEL SUPPORT COL. - BY METAL BUILDING MFR.
3. STEEL SUPPORT COL. - BY METAL BUILDING MFR. SEE 3/A3.2 FOR COLUMN PROTECTION
4. STEEL WIND COL. - BY METAL BUILDING MFR.
5. BOLLARD EACH SIDE OF OVERHEAD DOOR - SEE 4/A3.2

FE PORTABLE FIRE EXTINGUISHER, 10# ABC (OR AS DIRECTED BY LOCAL FIRE OFFICIAL) BY TENANT

WALL LEGEND

- 8x8x16 SPLIT FACE CMU, RUNNING BOND EXTEND TO 7'-4" A.F.F., SEE STRUCTURAL FOR REINFORCING LOCATIONS, FILL ALL CELLS WITH FOAM INSULATION
- METAL WALL PANEL ON STEEL GIRTS BY METAL BUILDING MFR.

4" 4000 PSI CONCRETE SLAB WITH 6X6 W2.9xW2.9 W.W.F. + FIBERMESH OVER 6 MIL. VAPOR RETARDER OVER 6" CRUSHED STONE BASE - SEE 8/S2.4 FOR SLAB JOINTS

6" 4000 PSI CONCRETE SLAB WITH 6X6 W2.9xW2.9 W.W.F. + FIBERMESH OVER 4" CRUSHED STONE BASE
SEE 8/S2.4 FOR SLAB JOINTS
F.F.E.= 115.0 (DATUM 0'-0")

ALTERNATE "A" INCLUDES THE FOLLOWING:
1 HOUR METAL STUD & GYPSUMBOARD ENCLOSURE w/ SHAFT WALL AT CEILING AT 10'-0" AFF, ADD CONCRETE FLOOR, PUMP ROOM AND MAN DOOR.
WALLS: UL #419 w/ 3/8" METAL STUDS AND 1 LAYER OF GYPSUM BOARD EACH SIDE
CEILING: UL #415 SHAFT WALL SYSTEM (SEE STRUCTURAL FOR FRAMING)

STEEL FRAMED STAIRCASE WITH GRATING TREADS AND LANDING - SEE 8/A3.2 AND 3/S2.2

STEEL FRAMED STAIRCASE WITH GRATING TREADS AND LANDING - SEE 8/A3.2 AND 3/S2.2